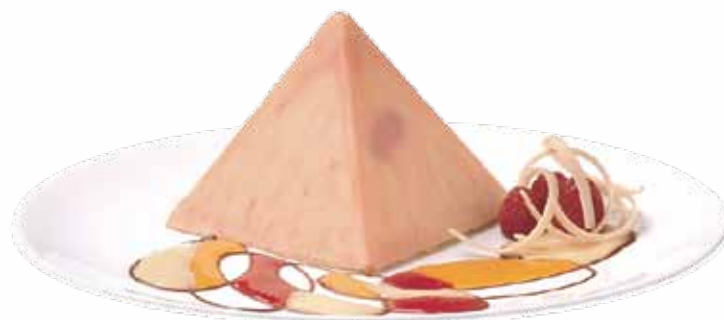




800.300.CAKE
www.frenchpatisserie.com

Raspberry Mont Blanc



Minicake

Description:

white chocolate mousse, "framboise" raspberry liquor-soaked raspberries, vanilla sponge, white and red pyramid shell

Specs:

Item #	A3240
Product Name	Raspberry Mont Blanc
Size	3"W x 2.75"H
Pack	36
Item Weight	3.11 oz
Case Net Weight	7 lbs
Case Gross Weight	8.5 lbs
Case Dimension	20x14x5
Case Cube	0.81
Ti/Hi	7/17
Pallet Count	119
UPC Code	10831193009405

Ingredients:

Cream, white chocolate (sugar, cocoa butter, milk powder, soya lecithin, vanilla), white chocolate coating (sugar, fractionated vegetable fat (palm kernel oil), skimmed milk powder, lactose, emulsifier: soya lecithin), raspberry, water, unbleached wheat flour, egg white, sugar, expeller canola oil, egg yolk, kirsch, egg white powder, rum, baking powder (sodium bicarbonate, sodium acid pyrophosphate, potato starch), gelatin, vanilla, salt, strawberry cocoa butter.

Manufactured on shared equipment with wheat, nuts, soy and dairy products.

Nutrition Facts	
Serving Size 98 g (98g)	
Servings per Container 1	
Amount per Serving	
Calories 300	Calories from Fat 190
% Daily Value*	
Total Fat 22g	33%
Saturated Fat 12g	60%
<i>Trans</i> Fat 0g	
Cholesterol 70mg	23%
Sodium 75mg	3%
Total Carbohydrate 23g	8%
Dietary Fiber 1g	4%
Sugars 8g	
Protein 3g	
Vitamin A 20%	Vitamin C 6%
Calcium 8%	Iron 2%
* Percent Daily Values are based on a 2,000 calorie diet. Your daily values may be higher or lower depending on your calorie needs.	
	Calories 2,000 2,500
Total Fat	Less than 65g 80g
Sat Fat	Less than 20g 25g
Cholesterol	Less than 300mg 300mg
Sodium	Less than 2,400mg 2,400mg
Total Carbohydrate	300g 375g
Dietary Fiber	25g 30g
Calories per gram	
Fat 9 • Carbohydrates 4 • Protein 4	

Shelf life:

1 year at 0 degrees or less - 5 days in cooler - 4 hours at room temperature

To serve: IT'S IMPERATIVE TO HANDLE THIS PRODUCT WHILE FROZEN

Remove all plastic packaging while frozen - break apart plastic cone by pulling on both sides of pre-cut tab - defrost at room temp. 1 hour - in cooler 3 hours